



DAØCW/p - 17.05.2015

WWFF DLFF-290
Nature-Reserve Eschenbacher Weihergebiet



this time location on the Schlammersdorfer pond

On our first activation my original plan was to settle at this location. It´s a small road leading directly to the ponds some meters down into the wood. However last time there was fishery science with heavy equipment active, so we couldn´t enter.

Our location from one month ago became meanwhile totally overgrown and was no choice for us this time.



preparing the station on a small sideway

Although it´s a great territory, it´s difficult to access. In april we had a total fallout of the closer distances, so only 10 DL-stations made it into the log, no OK and no OE. Anyway italian stations and croatian stations confirmed a good signal.

So of course this time was the target to work down the demand in germany also.

Like the first time we had most of the time no cellphone-connection so were dependend that someone else spotted us into the cluster.

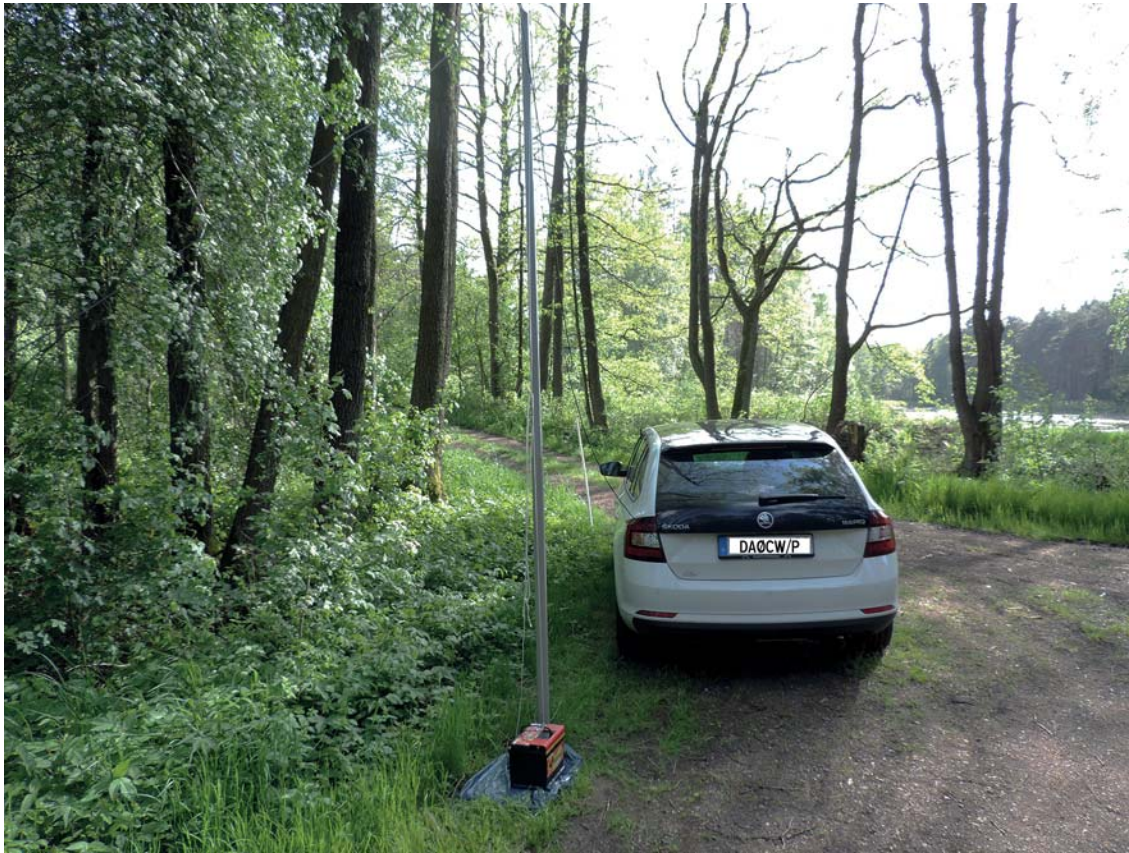
Our friend Friedrich DL4BBH was the first station at 1149 UTC who made it into the log. Weather was not too warm, about 16 degrees, but it was dry the whole time. Friedrich confirmed us a good signal and after his spot arrived lot of other friends were calling in. We could remain on the frequency for more than





DAØCW/p - 17.05.2015

WWFF DLFF-290
Nature-Reserve Eschenbacher Weihergebiet



location in the wood

one hour and worked about 140 stations before the interest there went down and we moved to 20, also here a nice opening to most areas in europe. When going back to 40 it was difficult to get a free frequency so we were a while in CW. When battery was getting to low, we decided to run the last 30 minutes of operation on WARC so changed the battery and the antenna against the 12/17-meter dipole. Also here of course the same problem. People don't turning over the band anymore, so we tried 17 CW and SSB and had a longer opening at

30 CW. Finally after around a bit less than 3 hours we ended with 244 contacts in the log. Last QSO was with SQ4OJL at 1443. This time nearly 40 percent with DL, 12 percent I and 9 percent SP. Also the friends in OE and OK had this time the chance with normal propagations to reach the log from this new counter. So together 450 contacts from both activities.

73, 44, 11 cu from the next one,
Manfred DF6EX

WWFF-committee-member
WCA-coordinator DL

COTA-Team-Germany #037 - COTA-Team-Russia
<http://logsearch.cotagroup.org>

All reports from previous activities can be found at:

All activities at:

<http://www.qrz.com/db/da0cw>

